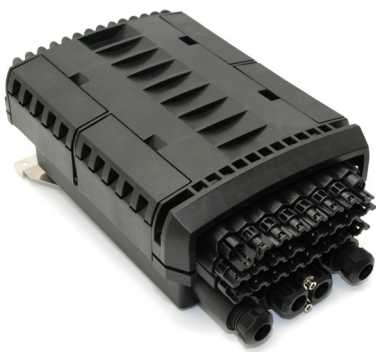


- ✓ Fiber optic splice closures
- ✓ Fiber optic patch panels
- ✓ Fiber optic distribution boxes



Fiber optic distribution boxes/closures



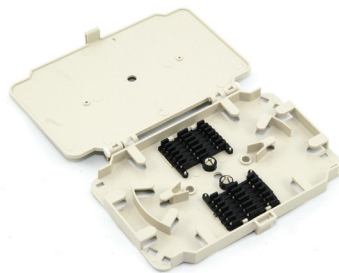
Fiber optic splice closures



Fiber optic patch panels



Fiber optic metal distribution boxes



Splice trays



Cassettes for splitter



Mini splice boxes



Accessories

TABLE OF CONTENTS

1. Fiber optic splice closures/boxes	3-12
1.1 Fiber optic distribution boxes	3-8
1.2 Fiber optic splice closures	8-11
1.3 Fiber optic horizontal splice closures	12
2. Fiber optic patch panels	13-19
3. Fiber optic patch panels for splitters	20
3.1 Cassettes for splitter	21
4. Fiber optic metal distribution boxes	21-22
5. Splice trays	23

Fiber optic distribution boxes

Fiber optic distribution box GFP-2A



Features:

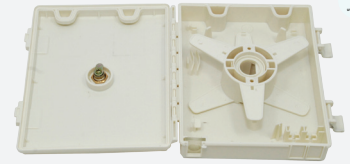
- >>> 1 optical fiber cable inlet
- >>> 2 optical fiber cable outlets
- >>> Material: PC
- >>> Colour: White
- >>> Dimensions: 166x120x28 mm
- >>> Weight: 0.2 kg
- >>> Protection: IP65
- >>> Hinged splice tray: (max. 4 fiber optic splice sleeves)
- >>> Number of slots for adapters: 4 (SC simplex/LC duplex)
- >>> Operating temperature: -35°C~+60°C
- >>> Collect of small diameter cable
- >>> Removable rubber seals for cables slots
- >>> Wall mounting

Equipment:

- >>> Fiber optic splice sleeve (x2)
- >>> Screws, rawplugs (x3)
- >>> Keys to the lock
- >>> Insulation tape



Fiber optic distribution box GFP-2S



Features:

- >>> For storage of drop cable
- >>> Material: PC
- >>> Colour: Light beige
- >>> Dimensions: 175x150x40 mm
- >>> Weight: 0.15 kg
- >>> Number of slots for optic splice sleeve: 2
- >>> Number of slots for adapters: 2 (SC simplex/LC duplex)
- >>> Protection: IP65
- >>> Operating temperature: -35°C~+60°C
- >>> For storage up to 30-meter cable (for 3 mm diameter)
- >>> Removable nylon seal for cable
- >>> Two integral plugs for adapters
- >>> Wall mounting

Equipment:

- >>> Screws (x3)
- >>> Rawplugs (x3)
- >>> Keys to the lock



Fiber optic distribution box GFP-4A



Features:

- >>> 1 optical fiber cable inlet
- >>> 4 optical fiber cable outlets
- >>> Material: PC+ABS
- >>> Colour: White
- >>> Dimensions: 205x135x38 mm
- >>> Weight: 0.45 kg
- >>> Protection: IP65
- >>> Hinged splice tray: (max. 8 fiber splice sleeves)
- >>> Number of slots for adapters: 4 (SC simplex/LC duplex)
- >>> Operating temperature: -35°C~+60°C
- >>> Removable rubber seals for cables slots
- >>> Wall mounting

Equipment:

- >>> Fiber optic splice sleeve (x4)
- >>> Mounting screws
- >>> Keys to the lock



Fiber optic distribution box GFP-8B



Features:

- >>> 2 optical fiber cable inlets
- >>> 12 optical fiber cable outlets
- >>> Material: PC+ABS
- >>> Colour: White
- >>> Dimensions: 250x200x72 mm
- >>> Weight: 0.8 kg
- >>> Protection: IP65
- >>> Hinged splice tray: (max. 12 fiber optic splice sleeves)
- >>> Number of slots for adapters: 4 (SC simplex/LC duplex)
- >>> Operating temperature: -35°C~+60°C
- >>> Cable glands for inlet cables
- >>> Rubber bushings for outlet cables
- >>> Wall or pole mounting

Equipment:

- >>> Fiber optic splice sleeve (x8)
- >>> Installation accessories
- >>> Cable ties
- >>> Fiber protective tube
- >>> Keys to the lock



Fiber optic distribution boxes

Fiber optic distribution box GFP-8E



Features:

- >>> 3 optical fiber cable inlets
- >>> 9 optical fiber cable outlets
- >>> Material: PC+ABS
- >>> Colour: White
- >>> Dimensions: 220x180x50 mm
- >>> Weight: 0.6 kg
- >>> Protection: IP65
- >>> Integrated splice tray
- >>> Number of slots for adapters: 4 (SC simplex/LC duplex)
- >>> Operating temperature: -35°C~+60°C
- >>> Removable rubber seals for cables slots
- >>> Folding slots for inlet cables
- >>> Wall or pole mounting

Equipment:

- >>> Fiber optic splice sleeve (x8)
- >>> Fiber protective tube
- >>> Cable ties
- >>> Keys to the lock



Fiber optic distribution box GFP-12T



Features:

- >>> 4 inlets/outlets
- >>> Stainless steel/ABS
- >>> Dimensions: 250x153x30 mm
- >>> Weight: 0.8 kg
- >>> Protection: IP65
- >>> Splice tray (max. 12 fiber optic splice sleeves)
- >>> Operating temperature: -35°C~+60°C
- >>> Aerial, duct, ground installations
- >>> Max. diameter of cables: 15 mm
- >>> Rubber pivots sealing slots
- >>> Option to add additional splice tray

Equipment:

- >>> Fiber optic splice sleeve (x12)
- >>> Splice tray
- >>> Insulation tape
- >>> Double-sided adhesive tape
- >>> Mounting screws (x8)
- >>> Cable ties
- >>> Mounting key



Fiber optic distribution box GFP-12C-BL



Features:

- >>> 2 optical fiber cable inlets
- >>> 13 optical fiber cable outlets
- >>> Material: PC
- >>> Colour: Black
- >>> Dimensions: 240x220x70 mm
- >>> Weight: 1.3 kg
- >>> Protection: IP65
- >>> Integrated splice tray (max. 20 fiber optic splice sleeves)
- >>> Number of slots for adapters: 12 (SC simplex/LC duplex)
- >>> Operating temperature: -35°C~+60°C
- >>> Rubber bushings for outlet cables
- >>> Folding slots for inlet cables
- >>> Wall mounting

Equipment:

- >>> Fiber optic splice sleeve (x12)
- >>> Cable ties
- >>> Installation accessories
- >>> Insulation tape
- >>> Keys to the lock
- >>> Fiber protective tube



Fiber optic distribution box GFP-12C



Features:

- >>> 2 optical fiber cable inlets
- >>> 13 optical fiber cable outlets
- >>> Material: PC
- >>> Colour: Grey
- >>> Dimensions: 240x220x70 mm
- >>> Weight: 1.3 kg
- >>> Protection: IP65
- >>> Integrated splice tray (max. 20 fiber optic splice sleeves)
- >>> Number of slots for adapters: 12 (SC simplex/LC duplex)
- >>> Operating temperature: -35°C~+60°C
- >>> Rubber bushings for outlet cables
- >>> Folding slots for inlet cables
- >>> Wall mounting

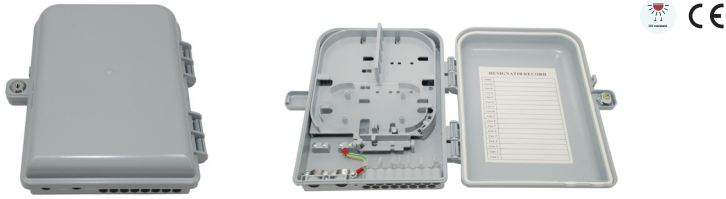
Equipment:

- >>> Fiber optic splice sleeve (x12)
- >>> Cable ties
- >>> Installation accessories
- >>> Insulation tape
- >>> Keys to the lock
- >>> Fiber protective tube



Fiber optic distribution boxes

Fiber optic distribution box GFP-16A



Features:

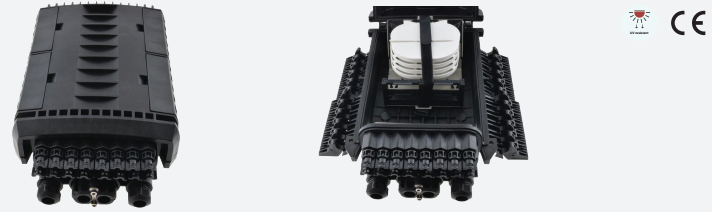
- >>> 2 optical fiber cable inlets
- >>> 16 optical fiber cable outlets
- >>> Material: PC+ABS
- >>> Colour: Grey
- >>> Dimensions: 315x245x100 mm
- >>> Weight: 1.3 kg
- >>> Protection: IP65
- >>> Integrated, hinged splice tray (max. 24 fiber optic splice sleeves)
- >>> Number of slots for adapters: 16 (SC simplex/LC duplex)
- >>> Operating temperature: -35°C~+70°C
- >>> Rubber bushings for outlet cables
- >>> Folding slots for inlet cables
- >>> Wall or pole mounting

Equipment:

- >>> Fiber optic splice sleeve (x16)
- >>> Fiber protective tube
- >>> Cable ties
- >>> Insulation tape
- >>> Keys to the lock



Fiber optic distribution box GFP-16C



Features:

- >>> 4 optical fiber cable inlets
- >>> 16 optical fiber cable outlets
- >>> Material: Polypropylene PP
- >>> Colour: Black
- >>> Dimensions: 388x242x128 mm
- >>> Weight: 3.5 kg
- >>> Protection: IP67
- >>> 4 splice trays (max. 96 fiber optic splice sleeves)
- >>> Number of slots for adapters: 16 (SC simplex/LC duplex)
- >>> Operating temperature: -35°C~+80°C
- >>> Sealing of all inlet/outlet slots
- >>> Max. diameter of inlet cables: 18 mm
- >>> Central duplex slots, external slots equipped with cable glands
- >>> Wall or pole mounting

Equipment:

- >>> Fiber optic splice sleeve (x96)
- >>> Fiber protective tube
- >>> Metal clamps (x4)
- >>> Metal mounting bracket
- >>> Plugs for pass-through ports (x4)
- >>> Cable ties
- >>> Mounting screws: (x2)
- >>> Insulation tape
- >>> Alkopad



Fiber optic distribution box GFP-16D



Features:

- >>> 2 optical fiber cable inlets
- >>> 16 optical fiber cable outlets
- >>> Material: PC
- >>> Colour: Grey
- >>> Dimensions: 310x250x90 mm
- >>> Weight: 1.5 kg
- >>> Protection: IP65
- >>> Integrated, hinged splice tray (max. 24 fiber optic splice sleeves)
- >>> Number of slots for adapters: 16 (SC simplex/LC duplex)
- >>> Operating temperature: -35°C~+60°C
- >>> Rubber bushings for outlet cables
- >>> Folding slots for inlet cables
- >>> Wall or pole mounting

Equipment:

- >>> Fiber optic splice sleeve (x12)
- >>> Cable ties
- >>> Installation accessories
- >>> Insulation tape
- >>> Keys to the lock
- >>> Fiber protective tube



Fiber optic distribution box GFP-16D-BL



Features:

- >>> 2 optical fiber cable inlets
- >>> 16 optical fiber cable outlets
- >>> Material: PC
- >>> Colour: Black
- >>> Dimensions: 310x250x90 mm
- >>> Weight: 1.5 kg
- >>> Protection: IP65
- >>> Integrated, hinged splice tray (max. 24 fiber optic splice sleeves)
- >>> Number of slots for adapters: 16 (SC simplex/LC duplex)
- >>> Operating temperature: -35°C~+60°C
- >>> Rubber bushings for outlet cables
- >>> Folding slots for inlet cables
- >>> Wall or pole mounting

Equipment:

- >>> Fiber optic splice sleeve (x12)
- >>> Cable ties
- >>> Installation accessories
- >>> Insulation tape
- >>> Keys to the lock
- >>> Fiber protective tube



Fiber optic distribution boxes

Fiber optic distribution box GFP-16N



Features:

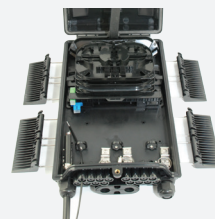
- >>> 4 optical fiber cable inlets
- >>> 16 optical fiber cable outlets
- >>> Material: PC+ABS
- >>> Colour: White
- >>> Dimensions: 340x200x85 mm
- >>> Weight: 1.6 kg
- >>> Protection: IP65
- >>> 3 integrated splice trays (max. 18 fiber optic splice sleeves)
- >>> Number of slots for adapters: 18 (SC simplex/LC duplex)
- >>> Operating temperature: -35°C~+70°C
- >>> Central duple slots, external slots equipped with cable glands
- >>> Sealing sleeves for outlet cables
- >>> Wall or pole mounting

Equipment:

- >>> Fiber optic splice sleeve (x16)
- >>> Fiber protective tube
- >>> Cable ties
- >>> Installation accessories
- >>> Insulation tape
- >>> Keys to the lock



Fiber optic distribution box GFP-16N-BL



Features:

- >>> 4 optical fiber cable inlets
- >>> 16 optical fiber cable outlets
- >>> Material: PC+ABS
- >>> Colour: Black
- >>> Dimensions: 340x200x85 mm
- >>> Weight: 1.6 kg
- >>> Protection: IP65
- >>> 3 integrated splice trays (max. 18 fiber optic splice sleeves)
- >>> Number of slots for adapters: 18 (SC simplex/LC duplex)
- >>> Operating temperature: -35°C~+70°C
- >>> Central duple slots, external slots equipped with cable glands
- >>> Sealing sleeves for outlet cables
- >>> Wall or pole mounting

Equipment:

- >>> Fiber optic splice sleeve (x16)
- >>> Fiber protective tube
- >>> Cable ties
- >>> Installation accessories
- >>> Insulation tape
- >>> Keys to the lock



Fiber optic distribution box GFP-16G



Features:

- >>> 2 optical fiber cable inlets
- >>> 16 optical fiber cable outlets
- >>> Material: PC+ABS
- >>> Colour: Grey
- >>> Dimensions: 300x240x95 mm
- >>> Weight: 1.7 kg
- >>> Protection: IP65
- >>> Integrated, hinged splice tray (max. 24 fiber optic splice sleeves)
- >>> Number of slots for adapters: 16 (SC simplex/LC duplex)
- >>> Operating temperature: -35°C~+70°C
- >>> Sealing sleeves for outlet cables
- >>> Folding slots for inlet cables
- >>> Wall or pole mounting

Equipment:

- >>> Fiber optic splice sleeve (x16)
- >>> Fiber protective tube
- >>> Cable ties
- >>> Installation accessories
- >>> Insulation tape
- >>> Keys to the lock



Fiber optic distribution box GFP-16G-BL

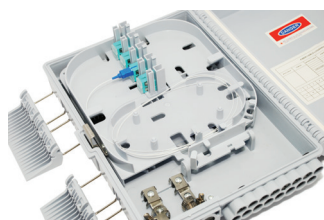


Features:

- >>> 2 optical fiber cable inlets
- >>> 16 optical fiber cable outlets
- >>> Material: PC+ABS
- >>> Colour: Black
- >>> Dimensions: 300x240x95 mm
- >>> Weight: 1.7 kg
- >>> Protection: IP65
- >>> Integrated, hinged splice tray (max. 24 fiber optic splice sleeves)
- >>> Number of slots for adapters: 16 (SC simplex/LC duplex)
- >>> Operating temperature: -35°C~+70°C
- >>> Sealing sleeves for outlet cables
- >>> Folding slots for inlet cables
- >>> Wall or pole mounting

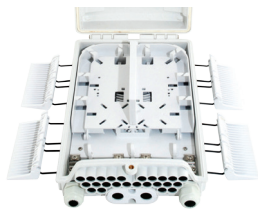
Equipment:

- >>> Fiber optic splice sleeve (x16)
- >>> Fiber protective tube
- >>> Cable ties
- >>> Installation accessories
- >>> Insulation tape
- >>> Keys to the lock



Fiber optic distribution boxes

Fiber optic distribution box GFP-24N



Features:

- >>> 4 optical fiber cable inlets
- >>> 24 optical fiber cable outlets
- >>> Material: PC+ABS
- >>> Colour: White
- >>> Dimensions: 330x220x85 mm
- >>> Weight: 1.8 kg
- >>> Protection: IP65
- >>> Integrated splice tray (max. 24 fiber optic splice sleeves)
- >>> Number of slots for adapters: 24 (SC simplex/LC duplex)
- >>> Operating temperature: -35°C~+70°C

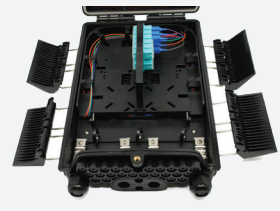
Equipment:

- >>> Fiber optic splice sleeve (x16)
- >>> Fiber protective tube
- >>> Cable ties
- >>> Installation accessories
- >>> Metal clamps (x4)
- >>> Keys to the lock

- >>> External slots equipped with cable glands PG19
- >>> Central duple slots (max. diameter of cables 18 mm)
- >>> Sealing sleeves for outlet cables
- >>> Wall or pole mounting



Fiber optic distribution box GFP-24N-BL



Features:

- >>> 4 optical fiber cable inlets
- >>> 24 optical fiber cable outlets
- >>> Material: PC+ABS
- >>> Colour: Black
- >>> Dimensions: 330x220x85 mm
- >>> Weight: 1.8 kg
- >>> Protection: IP65
- >>> Integrated splice tray (max. 24 fiber optic splice sleeves)
- >>> Number of slots for adapters: 24 (SC simplex/LC duplex)
- >>> Operating temperature: -35°C~+70°C

Equipment:

- >>> Fiber optic splice sleeve (x16)
- >>> Fiber protective tube
- >>> Cable ties
- >>> Installation accessories
- >>> Metal clamps (x4)
- >>> Keys to the lock

- >>> External slots equipped with cable glands PG19
- >>> Central duple slots (max. diameter of cables 18 mm)
- >>> Sealing sleeves for outlet cables
- >>> Wall or pole mounting



Fiber optic distribution box GFP-24B



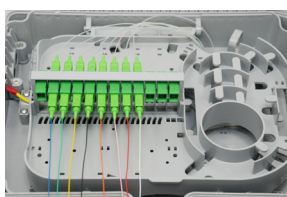
Features:

- >>> 3 optical fiber cable inlets
- >>> 24 optical fiber cable outlets
- >>> Material: PC+ABS
- >>> Colour: Grey
- >>> Dimensions: 300x235x100 mm
- >>> Weight: 1.3 kg
- >>> Protection: IP65
- >>> Number of slots for fiber optic splice sleeves: 24
- >>> Number of slots for adapters: 24 (SC simplex/LC duplex)
- >>> Operating temperature: -35°C~+70°C

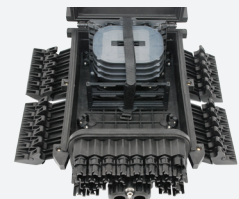
Equipment:

- >>> Fiber optic splice sleeves (x24)
- >>> Insulation tape
- >>> Fiber protective tube
- >>> Screws and wall plugs (x4)
- >>> Keys to the lock

- >>> Rubber seals for outlet cables
- >>> Folding slots for inlet cables
- >>> Wall or pole mounting



Fiber optic distribution box GFP-24C



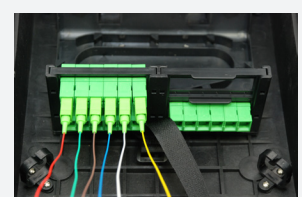
Features:

- >>> 2 optical fiber cable inlets
- >>> 24 optical fiber cable outlets
- >>> Material: PC+ABS
- >>> Colour: Black
- >>> Dimensions: 388x242x128 mm
- >>> Weight: 3.6 kg
- >>> Protection: IP67
- >>> 4 splice trays (max. 96 fiber optic splice sleeves)
- >>> Number of slots for adapters: 24 (SC simplex/LC duplex)
- >>> Operating temperature: -35°C~+80°C

Equipment:

- >>> Fiber optic splice sleeve (x96)
- >>> Fiber protective tube
- >>> Metal clamps (x4)
- >>> Metal mounting bracket
- >>> Plugs for pass-through ports (x4)
- >>> Cable ties
- >>> Mounting screws: (x2)
- >>> Insulation tape
- >>> Alkopad

- >>> Sealing of all inlet/outlet slots
- >>> Max. diameter of inlet cables: 18 mm
- >>> Wall or pole mounting



Fiber optic distribution boxes

Fiber optic distribution box GFP-24C-2



Features:

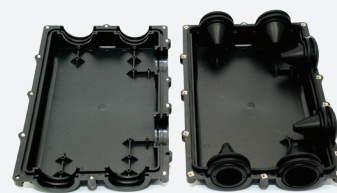
- >>> 4 optical fiber cable inlets
- >>> 16 optical fiber cable outlets
- >>> Material: Polypropylene PP
- >>> Colour: Black
- >>> Dimensions: 388x242x150 mm
- >>> Weight: 5 kg
- >>> Protection: IP67
- >>> 6 splice trays (max. 144 fiber optic splice sleeves)
- >>> Number of slots for adapters: 24 (SC simplex/LC duplex)
- >>> Operating temperature: -35°C~+80°C
- >>> Sealing of all inlet/outlet slots
- >>> Max. diameter of inlet cables: 18-21 mm
- >>> Central duple slots, external slots equipped with cable glands
- >>> Wall or pole mounting

Equipment:

- >>> Fiber optic splice sleeve (x96)
- >>> Fiber protective tube
- >>> Metal clamps (x4)
- >>> Metal mounting bracket
- >>> Plugs for pass-through ports (x4)
- >>> Cable ties
- >>> Mounting screws: (x2)
- >>> Insulation tape
- >>> Alkopad



Fiber optic distribution box GFP-6R to connect microduct tubes



Features:

- >>> Number of ports/inlets: 6
- >>> Material: ABS
- >>> Colour: Black
- >>> Dimensions: 316x220x72 mm
- >>> Weight: 1 kg
- >>> Protection: IP67
- >>> Operating temperature: -35°C~+70°C

Applications:

- >>> Microduct tubes connections
- >>> Multipipes connections
- >>> Putting bundles
- >>> In cable wells
- >>> Directly in the ground
- >>> Removable rubber
- >>> Inlets placed on 3 walls
- >>> Range of diameters of inducted elements: 10-48 mm



Fiber optic splice closures

Fiber optic splice closure I-M.048.3.1



Features:

- >>> 3 round ports (ø17 mm)
- >>> 1 oval port (dimensions: 44x27 mm)
- >>> Material: Polypropylene PP
- >>> Colour: Black
- >>> Height: 300 mm
- >>> Cover diameter: 120 mm
- >>> Weight: 2.1 kg
- >>> Protection: IP68
- >>> 4 splice trays
- >>> Max. 144 fiber optic splice sleeves
- >>> Operating temperature: -35°C~+65°C
- >>> Aerial, duct, ground installations
- >>> Heat shrink sleeves for all ports
- >>> Wall or pole mounting

Equipment:

- >>> Wall mounting bracket
- >>> Clamp for pole mounting
- >>> Fiber optic splice sleeve (x48)
- >>> Heat shrink sleeve (x4)
- >>> Vent
- >>> Markers
- >>> Insulation tape



Fiber optic splice closure I-M.048.3.1-G



Features:

- >>> 4 cable gland ports
- >>> Material: Polypropylene PP
- >>> Colour: Black
- >>> Height: 288 mm
- >>> Cover diameter: 178 mm
- >>> Weight: 2.3 kg
- >>> Protection: IP67
- >>> 4 splice trays
- >>> Max. 96 fiber optic splice sleeves
- >>> Operating temperature: -35°C~+65°C

Equipment:

- >>> Wall mounting bracket
- >>> Clamp for pole mounting
- >>> Fiber optic splice sleeve (x48)
- >>> Markers
- >>> Insulation tape



- >>> Aerial, duct, ground installations
- >>> Wall or pole mounting



Fiber optic splice closures

Fiber optic splice closure T-M.048.3.1



Features:

- >> 3 round ports (ø22 mm)
- >> 1 oval port (dimensions: 43x22 mm)
- >> Material: Polypropylene PP
- >> Colour: Black
- >> Height: 300 mm
- >> Cover diameter: 120 mm
- >> Weight: 2.2 kg
- >> Protection: IP68
- >> 4 splice trays
- >> Max. 48 fiber optic splice sleeves
- >> Operating temperature: -35°C~+65°C

Equipment:

- >> Wall mounting bracket
- >> Clamp for pole mounting
- >> Fiber optic splice sleeve (x48)
- >> Heat shrink sleeve (x4)
- >> Vent
- >> Markers
- >> Insulation tape

- >> Aerial, duct, ground installations
- >> Heat shrink sleeves for all ports
- >> Wall or pole mounting



Fiber optic splice closure I-M.096.3.1



Features:

- >> 3 round ports (ø21 mm)
- >> 1 oval port (dimensions: 46x26 mm)
- >> Material: Polypropylene PP
- >> Colour: Black
- >> Height: 430 mm
- >> Cover diameter: 120 mm
- >> Weight: 2.8 kg
- >> Protection: IP68
- >> 4 splice trays
- >> Max. 96 fiber optic splice sleeves
- >> Operating temperature: -35°C~+65°C

Equipment:

- >> Wall mounting bracket
- >> Clamp for pole mounting
- >> Fiber optic splice sleeve (x96)
- >> Heat shrink sleeve (x4)
- >> The ground wire
- >> Markers
- >> Insulation tape

- >> Aerial, duct, ground installations
- >> Heat shrink sleeves for all ports
- >> Wall or pole mounting



Fiber optic splice closure T-M.096.3.1



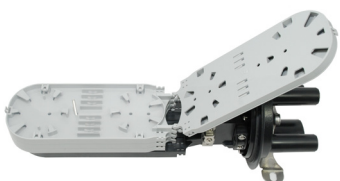
Features:

- >> 3 round ports (ø21 mm)
- >> 1 oval port (dimensions: 46x26 mm)
- >> Material: Polypropylene PP
- >> Colour: Black
- >> Height: 420 mm
- >> Cover diameter: 120 mm
- >> Weight: 2.8 kg
- >> Protection: IP68
- >> 4 splice trays
- >> Max. 96 fiber optic splice sleeves
- >> Operating temperature: -35°C~+65°C

Equipment:

- >> Wall mounting bracket
- >> Clamp for pole mounting
- >> Fiber optic splice sleeve (x96)
- >> Heat shrink sleeve (x4)
- >> The ground wire
- >> Markers
- >> Insulation tape

- >> Aerial, duct, ground installations
- >> Heat shrink sleeves for all ports
- >> Wall or pole mounting



Fiber optic splice closure I-M.144.3.1



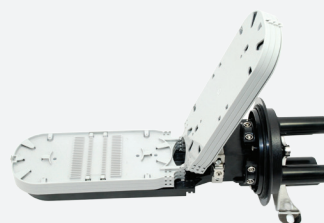
Features:

- >> 3 round ports (ø20 mm)
- >> 1 oval port (dimensions: 46x23 mm)
- >> Material: Polypropylene PP
- >> Colour: Black
- >> Height: 420 mm
- >> Cover diameter: 120 mm
- >> Weight: 2.4 kg
- >> Protection: IP68
- >> 6 splice trays
- >> Max. 144 fiber optic splice sleeves
- >> Operating temperature: -35°C~+65°C

Equipment:

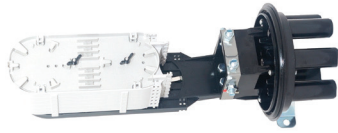
- >> Wall mounting bracket
- >> Clamp for pole mounting
- >> Heat shrink sleeve (x4)
- >> Fiber optic splice sleeve (x96)
- >> Insulation tape

- >> Aerial, duct, ground installations
- >> Heat shrink sleeves for all ports
- >> Wall or pole mounting



Fiber optic splice closures

Fiber optic splice closure I-M.144.4.1



Features:

- >> 4 round ports (ø22 mm)
- >> 1 oval port (dimensions: 43x25 mm)
- >> Material: Polypropylene PP
- >> Colour: Black
- >> Height: 500 mm
- >> Cover diameter: 190 mm
- >> Weight: 4 kg
- >> Protection: IP68
- >> 6 splice trays
- >> Max. 144 fiber optic splice sleeves
- >> Operating temperature: -35°C~+65°C

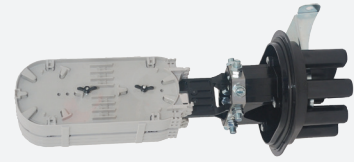
Equipment:

- >> Wall mounting bracket
- >> Fiber optic splice sleeve (x144)
- >> Heat shrink sleeve (x5)
- >> Fiber protective tubes
- >> The ground wire
- >> Insulation tape
- >> Sandpaper

- >> Aerial, duct, ground installations
- >> Heat shrink sleeves for all ports
- >> Wall or pole mounting



Fiber optic splice closure I-M.144.6.1



Features:

- >> 6 round ports (ø22 mm)
- >> 1 oval port (dimensions: 43x25 mm)
- >> Material: Polypropylene PP
- >> Colour: Black
- >> Height: 450 mm
- >> Cover diameter: 190 mm
- >> Weight: 3.8 kg
- >> Protection: IP68
- >> 6 splice trays
- >> Max. 144 fiber optic splice sleeves
- >> Operating temperature: -35°C~+65°C

Equipment:

- >> Wall mounting bracket
- >> Fiber optic splice sleeve (x144)
- >> Heat shrink sleeve (x7)
- >> Fiber protective tubes
- >> The ground wire
- >> Insulation tape
- >> Sandpaper

- >> Aerial, duct, ground installations
- >> Heat shrink sleeves for all ports
- >> Wall or pole mounting



Fiber optic splice closure I-M.144.5.1



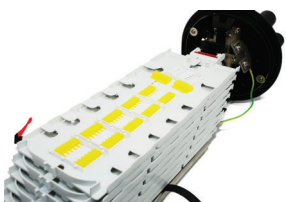
Features:

- >> 5 round ports (ø35 mm)
- >> 1 oval port (dimensions: 82x49 mm)
- >> Material: Polypropylene PP
- >> Colour: Black
- >> Height: 700 mm
- >> Cover diameter: 250 mm
- >> Weight: 5.2 kg
- >> Protection: IP68
- >> 8 splice trays
- >> Max. 288 fiber optic splice sleeves
- >> Operating temperature: -35°C~+65°C

Equipment:

- >> Wall mounting bracket
- >> Clamp for pole mounting
- >> Fiber optic splice sleeve (x288)
- >> Heat shrink sleeve (x6)
- >> A set of gloves
- >> Moisture absorbing pouch
- >> Fiber protective tubes
- >> Fiber clip
- >> The ground wires
- >> Sandpaper
- >> Wall plugs

- >> Aerial, duct, ground installations
- >> Heat shrink sleeves for all ports
- >> Wall or pole mounting



Fiber optic splice closure I-M.144.7.1



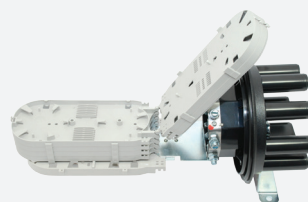
Features:

- >> 7 round ports (ø25 mm)
- >> 1 oval port (dimensions: 82x46 mm)
- >> Material: Polypropylene PP
- >> Colour: Black
- >> Height: 500 mm
- >> Cover diameter: 180 mm
- >> Weight: 4 kg
- >> Protection: IP68
- >> 6 splice trays
- >> Max. 144 fiber optic splice sleeves
- >> Operating temperature: -35°C~+65°C

Equipment:

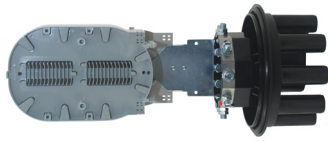
- >> Wall mounting bracket
- >> Clamp for pole mounting
- >> Fiber optic splice sleeve (x144)
- >> Heat shrink sleeve (x6)
- >> Insulation tape
- >> Fiber clip

- >> Aerial, duct, ground installations
- >> Heat shrink sleeves for all ports
- >> Wall or pole mounting



Fiber optic splice closures

Fiber optic splice closure I-M.288.7.1



Features:

- >> 7 round ports (ø30 mm)
- >> 1 oval port (dimensions: 80x45 mm)
- >> Material: Polypropylene PP
- >> Colour: Black
- >> Height: 510 mm
- >> Cover diameter: 250 mm
- >> Weight: 5.5 kg
- >> Protection: IP67
- >> 5 splice trays
- >> Max. 288 fiber optic splice sleeves
- >> Operating temperature: -35°C~+65°C

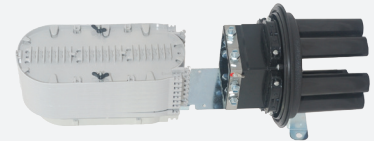
Equipment:

- >> Wall mounting bracket
- >> Fiber optic splice sleeve (x288)
- >> Heat shrink sleeve (x8)
- >> Fiber protective tubes
- >> Insulation tape
- >> Sandpaper

- >> Aerial, duct, ground installations
- >> Heat shrink sleeves for all ports
- >> Wall or pole mounting



Fiber optic splice closure I-M.360.6.1



Features:

- >> 6 round ports (ø25 mm)
- >> 1 oval port (dimensions: 80x50 mm)
- >> Material: Polypropylene PP
- >> Colour: Black
- >> Height: 500 mm
- >> Cover diameter: 190 mm
- >> Weight: 5.5 kg
- >> Protection: IP67
- >> 6 splice trays
- >> Max. 360 fiber optic splice sleeves
- >> Operating temperature: -35°C~+65°C

Equipment:

- >> Wall mounting bracket
- >> Fiber optic splice sleeve (x360)
- >> Heat shrink sleeve (x7)
- >> Fiber protective tubes
- >> Insulation tape
- >> Sandpaper

- >> Aerial, duct, ground installations
- >> Heat shrink sleeves for all ports
- >> Wall or pole mounting



Fiber optic splice closure I-M.288.16.1



Features:

- >> 8 round ports (8 x ø19 mm)
- >> 8 round ports (8 x ø25 mm)
- >> 1 oval port (dimensions: 94x35 mm)
- >> Material: Polypropylene PP
- >> Colour: Black
- >> Height: 515 mm
- >> Cover diameter: 250 mm
- >> Weight: 5 kg
- >> Protection: IP68
- >> 24 splice trays
- >> Max. 288 fiber optic splice sleeves (24x12)
- >> Operating temperature: -35°C~+65°C

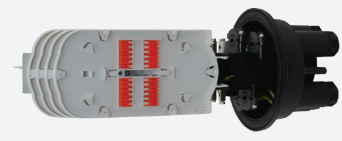
Equipment:

- >> Wall mounting bracket
- >> Fiber optic splice sleeve (x288)
- >> Heat shrink sleeve (x8)
- >> A set of gloves
- >> Moisture absorbing pouch
- >> Fiber protective tubes
- >> Fiber clip
- >> The ground wires
- >> Sandpaper
- >> Wall plugs

- >> Aerial, duct, ground installations
- >> Heat shrink sleeves for all ports
- >> Wall or pole mounting



Fiber optic splice closure T-T004, adapters slots



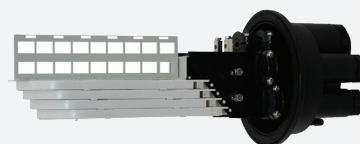
Features:

- >> 5 round ports
- >> Material: Polipropylene PP
- >> Colour: Black
- >> Protection: IP67
- >> 4 splice trays
- >> Max. 72 fiber optic splice sleeves
- >> Number of slots for adapters SC simplex/duplex: 36/18
- >> Operating temperature: -35°C~+65°C

Equipment:

- >> Fiber optic splice sleeve (x72)
- >> Insulation tape
- >> The ground wire
- >> Patchpanel
- >> Mixers

- >> Aerial, duct, ground installations
- >> Wall or pole mounting



Horizontal fiber optic splice closures

Horizontal fiber optic splice closure T-TH001, 96F



Features:

- >>> 4 round ports (ø13 mm)
- >>> 2 round ports (ø20 mm)
- >>> Material: Polypropylene PP
- >>> Colour: Black
- >>> Dimensions: 390x210x120 mm
- >>> Weight: 2.2 kg
- >>> Protection: IP67
- >>> Max. 96 fiber optic splice sleeves
- >>> Operating temperature: -35°C~+65°C

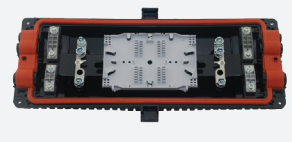
Equipment:

- >>> Mounting tape
- >>> Sealing tape
- >>> Fiber optic splice sleeve (x96)
- >>> Sandpaper
- >>> Self-adhesive labels
- >>> Installation hooks

>>> Aerial, duct, ground installations



Horizontal fiber optic splice closure T-TH005, 144F



Features:

- >>> 2 round ports (ø16 mm)
- >>> 2 round ports (ø20 mm)
- >>> 2 round ports (ø23 mm)
- >>> Material: Polypropylene PP
- >>> Colour: Black
- >>> Dimensions: 450x220x160mm
- >>> Weight: 3.5 kg
- >>> Protection: IP67
- >>> Max. 144 fiber optic splice sleeves
- >>> Operating temperature: -35°C~+65°C

Equipment:

- >>> Mounting tape
- >>> Sealing tape
- >>> Fiber optic splice sleeve (x144)
- >>> Sandpaper
- >>> Self-adhesive labels
- >>> Installation hooks

>>> Aerial, duct, ground installations



Horizontal fiber optic splice closure T-TH011, 48F



Features:

- >>> 4 round ports (ø16 mm)
- >>> Material: Polypropylene PP
- >>> Colour: Black
- >>> Dimensions: 340x150x70 mm
- >>> Weight: 2.2 kg
- >>> Protection: IP68
- >>> Max. 48 fiber optic splice sleeves
- >>> Operating temperature: -35°C~+65°C

Wyposażenie:

- >>> Wall mounting bracket
- >>> Splice trays (x2)
- >>> Fiber optic splice sleeve (x48)
- >>> Sealing tape
- >>> Mounting tape
- >>> Sandpaper
- >>> Self-adhesive labels

>>> Aerial, duct, ground installations



Horizontal fiber optic splice closure T-TH4015, 24F



Features:

- >>> 3 cable gland ports
- >>> Material: Polypropylene PP
- >>> Colour: Black
- >>> Dimensions: 240x195x90 mm
- >>> Weight: 1.5 kg
- >>> Protection: IP67
- >>> 2 splice trays
- >>> Max. 24 fiber optic splice sleeves
- >>> Max. cable diameter: 12 mm
- >>> Operating temperature: -35°C~+65°C

Equipment:

- >>> Fiber optic splice sleeve (x24)
- >>> Cable ties
- >>> Markers
- >>> Key to the lock
- >>> Sandpaper

>>> Aerial, duct, ground installations



Fiber optic patch panels

Fiber optic patch panels 1U/19", 12F/12xSC Simplex

0-1U-12-SI-GR



0-1U-12-SI-W-GR



0-1U-12-SI-WY-GR



Applications:

- Server rooms
- Fibre-optic networks
- Data processing centers
- LAN, CATV, OAN, FTTH



Product ID	0-1U-12-SI-GR	0-1U-12-SI-W-GR	0-1U-12-SI-WY-GR
Construction	Rack mounted	Slide out/drawer type	Slide out on rollers/drawer type
Type of adapters	SC Simplex/LC Duplex	SC Simplex/LC Duplex	SC Simplex/LC Duplex
Max. number of adapters	12	12	12
Height	1U	1U	1U
Profile	19"	19"	19"
Depth [mm]	220	250	250
Number of splice trays	1	1	1
Max. number of splice trays	3	3	3
Capacity of splice tray	12/24	12/24	12/24
Diameter of outlet ports	2x20 /2xPG-13.5	2x20 /2xPG-13.5	2x20 /2xPG-13.5
Material	Cold rolled steel	Cold rolled steel	Cold rolled steel
Colour	Light gray	Light gray	Light gray
Weight	1.5 kg	2 kg	2 kg

Equipment

- Splice tray 12F
- Cable organizer
- Cable glands PG-13.5: 2
- Fiber optic splice sleeve: 12
- Mounting screws for adapters: 24
- Plastic cable ties
- Blocking pins

Fiber optic patch panels 1U/19", 24F/24xSC Simplex

0-1U-24-SI-GR



0-1U-24-SI-BL



0-1U-24-SI-W-GR



0-1U-24-SI-WY-GR



Product ID	0-1U-24-SI-GR	0-1U-24-SI-BL	0-1U-24-SI-W-GR	0-1U-24-SI-WY-GR
Construction	Rack mounted	Rack mounted	Slide out/drawer type	Slide out on rollers/drawer type
Type of adapters	SC Simplex/LC Duplex	SC Simplex/LC Duplex	SC Simplex/LC Duplex	SC Simplex/LC Duplex
Max. number of adapters	24	24	24	24
Height	1U	1U	1U	1U
Profile	19"	19"	19"	19"
Depth [mm]	250	250	250	250
Number of splice trays	1	1	1	1
Max. number of splice trays	3	3	3	3
Capacity of splice tray	12/24	12/24	12/24	12/24
Diameter of outlet ports	2x20 /2xPG-13.5	2x20 /2xPG-13.5	2x20 /2xPG-13.5	2x20 /2xPG-13.5
Material	Cold rolled steel	Cold rolled steel	Cold rolled steel	Cold rolled steel
Colour	Light gray	Black	Light gray	Light gray
Weight	2 kg	2 kg	2 kg	2 kg

Equipment

- Splice tray 12F
- Cable organizer
- Cable glands PG-13.5: 2
- Fiber optic splice sleeve: 24
- Mounting screws for adapters: 48
- Plastic cable ties
- Blocking pins

Fiber optic patch panels

Fiber optic patch panels 1U/19", 24F/12xSC Duplex

0-1U-24-DU-GR



0-1U-24-DU-W-GR



0-1U-24-DU-WY-GR



Applications:

- Server rooms
- Fibre-optic networks
- Data processing centers
- LAN, CATV, OAN, FTTH



Product ID	0-1U-24-DU-GR	0-1U-24-DU-W-GR	0-1U-24-DU-WY-GR
Construction	Rack mounted	Slide out/drawer type	Slide out on rollers/drawer type
Type of adapters	SC Duplex	SC Duplex	SC Duplex
Max. number of adapters	12	12	12
Height	1U	1U	1U
Profile	19"	19"	19"
Depth [mm]	250	250	250
Number of splice trays	1	1	1
Max. number of splice trays	3	3	3
Capacity of splice tray	12/24	12/24	12/24
Diameter of outlet ports	2x20 /2xPG-13.5	2x20 /2xPG-13.5	2x20 /2xPG-13.5
Material	Cold rolled steel	Cold rolled steel	Cold rolled steel
Colour	Light gray	Light gray	Light gray
Weight	2 kg	2 kg	2 kg

Equipment

- Splice tray 12/24F
- Cable organizer
- Cable glands PG-13.5: 2
- Fiber optic splice sleeve: 24
- Mounting screws for adapters: 24
- Plastic cable ties
- Blocking pins

Fiber optic patch panels 1U/19", 24F/12xSC Duplex, black

0-1U-24-DU-BL



0-1U-24-DU-W-BL



0-1U-24-DU-WY-BL



Applications:

- Server rooms
- Fibre-optic networks
- Data processing centers
- LAN, CATV, OAN, FTTH



Product ID	0-1U-24-DU-BL	0-1U-24-DU-W-BL	0-1U-24-DU-WY-BL
Construction	Rack mounted	Slide out/drawer type	Slide out on rollers/drawer type
Type of adapters	SC Duplex	SC Duplex	SC Duplex
Max. number of adapters	12	12	12
Height	1U	1U	1U
Profile	19"	19"	19"
Depth [mm]	250	250	250
Number of splice trays	1	1	1
Max. number of splice trays	3	3	3
Capacity of splice tray	12/24	12/24	12/24
Diameter of outlet ports	2x20 /2xPG-13.5	2x20 /2xPG-13.5	2x20 /2xPG-13.5
Material	Cold rolled steel	Cold rolled steel	Cold rolled steel
Colour	Black	Black	Black
Weight	2 kg	2 kg	2 kg

Equipment

- Splice tray 12/24F
- Cable organizer
- Cable glands PG-13.5: 2
- Fiber optic splice sleeve: 24
- Mounting screws for adapters: 24
- Plastic cable ties
- Blocking pins

Fiber optic patch panels

Fiber optic patch panels 1U/19", 48F/24xSC Duplex

0-1U-48-DU-GR



0-1U-48-DU-W-GR



0-1U-48-DU-WY-GR



Equipment

- >>> 2 splice trays 12/24F
- >>> Cable organizer
- >>> Cable glands PG-13.5: 2
- >>> Fiber optic splice sleeve: 48
- >>> Mounting screws for adapters: 48
- >>> Plastic cable ties
- >>> Blocking pins

Applications:

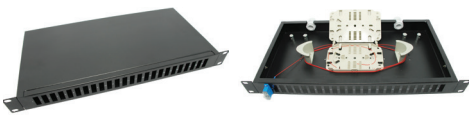
- >> Server rooms
- >> Fibre-optic networks
- >> Data processing centers
- >> LAN, CATV, OAN, FTTH



Product ID	0-1U-48-DU-GR	0-1U-48-DU-W-GR	0-1U-48-DU-WY-GR
Construction	Rack mounted	Slide out/drawer type	Slide out on rollers/drawer type
Type of adapters	SC Duplex	SC Duplex	SC Duplex
Max. number of adapters	24	24	24
Height	1U	1U	1U
Profile	19"	19"	19"
Depth [mm]	250	250	250
Number of splice trays	2	2	2
Max. number of splice trays	3	3	3
Capacity of splice tray	12/24	12/24	12/24
Diameter of outlet ports	2x20 /2xPG-13.5	2x20 /2xPG-13.5	2x20 /2xPG-13.5
Material	Cold rolled steel	Cold rolled steel	Cold rolled steel
Colour	Light gray	Light gray	Light gray
Weight	2 kg	2 kg	2 kg

Fiber optic patch panels 1U/19", 48F/24xSC Duplex, black

0-1U-48-DU-BL



0-1U-48-DU-W-BL



0-1U-48-DU-WY-BL



Equipment

- >>> 2 splice trays 12/24F
- >>> Cable organizer
- >>> Cable glands PG-13.5: 2
- >>> Fiber optic splice sleeve: 48
- >>> Mounting screws for adapters: 48
- >>> Plastic cable ties
- >>> Blocking pins

Applications:

- >> Server rooms
- >> Fibre-optic networks
- >> Data processing centers
- >> LAN, CATV, OAN, FTTH



Product ID	0-1U-48-DU-BL	0-1U-48-DU-W-BL	0-1U-48-DU-WY-BL
Construction	Rack mounted	Slide out/drawer type	Slide out on rollers/drawer type
Type of adapters	SC Duplex	SC Duplex	SC Duplex
Max. number of adapters	24	24	24
Height	1U	1U	1U
Profile	19"	19"	19"
Depth [mm]	250	250	250
Number of splice trays	2	2	2
Max. number of splice trays	3	3	3
Capacity of splice tray	12/24	12/24	12/24
Diameter of outlet ports	2x20 /2xPG-13.5	2x20 /2xPG-13.5	2x20 /2xPG-13.5
Material	Cold rolled steel	Cold rolled steel	Cold rolled steel
Colour	Black	Black	Black
Weight	2 kg	2 kg	2 kg

Fiber optic patch panels

Fiber optic patch panels 2U/19", 24F/24xSC Simplex

0-2U-24-SI-W-GR



Applications:

- Server rooms
- Fibre-optic networks
- Data processing centers
- LAN, CATV, OAN, FTTH

Product ID	0-2U-24-SI-W-GR
Construction	Slide out/drawer type
Type of adapters	SC Simplex/LC Duplex
Max. number of adapters	24
Height	2U
Profile	19"
Depth [mm]	250
Number of splice trays	2
Max. number of splice trays	6
Capacity of splice tray	12/24
Diameter of outlet ports	4x20/4x16 mm
Material	Cold rolled steel
Colour	Light gray
Weight	3 kg

Equipment

- 2 splice trays 12/24F
- Cable organizer
- Cable glands PG-13.5: 2
- Fiber optic splice sleeve: 24
- Mounting screws for adapters: 48
- Plastic cable ties
- Blocking pins

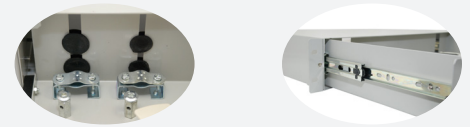
Fiber optic patch panels 2U/19", 48F/48xSC Simplex

0-2U-48-SI-GR



Applications:

- Server rooms
- Fibre-optic networks
- Data processing centers
- LAN, CATV, OAN, FTTH



Product ID	0-2U-48-SI-GR	0-2U-48-SI-W-GR	0-2U-48-SI-WY-GR
Construction	Rack mounted	Slide out/drawer type	Slide out on rollers/drawer type
Type of adapters	SC Simplex/LC Duplex	SC Simplex/LC Duplex	SC Simplex/LC Duplex
Max. number of adapters	48	48	48
Height	2U	2U	2U
Profile	19"	19"	19"
Depth [mm]	250	250	250
Number of splice trays	2	2	2
Max. number of splice trays	6	6	6
Capacity of splice tray	12/24	12/24	12/24
Diameter of outlet ports	4x20/4x16	4x20/4x16	4x20/4x16
Material	Cold rolled steel	Cold rolled steel	Cold rolled steel
Colour	Light gray	Light gray	Light gray
Weight	3 kg	3 kg	3 kg

0-2U-48-SI-W-GR



0-2U-48-SI-WY-GR



Equipment

- 2 splice trays 12/24F
- Cable organizer
- Cable glands PG-13.5: 2
- Fiber optic splice sleeve: 48
- Mounting screws for adapters: 96
- Plastic cable ties
- Blocking pins

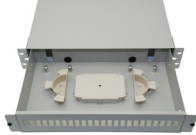
Fiber optic patch panels

Fiber optic patch panels 2U/19", 48F/24xSC Duplex

0-2U-48-DU-W-GR



0-2U-48-DU-WY-GR



Applications:

- Server rooms
- Fibre-optic networks
- Data processing centers



- LAN, CATV
- OAN
- FTTH



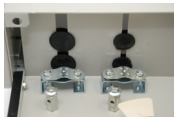
Product ID	0-2U-48-DU-W-GR	0-2U-48-DU-WY-GR
Construction	Slide out/drawer type	Slide out on rollers/drawer type
Type of adapters	SC Simplex	SC Simplex
Max. number of adapters	48	48
Height	2U	2U
Profile	19"	19"
Depth [mm]	250	250
Number of splice trays	2	2
Max. number of splice trays	6	6
Capacity of splice tray	12/24	12/24
Diameter of outlet ports	4x20/4x16	4x20/4x16
Material	Cold rolled steel	Cold rolled steel
Colour	Light gray	Light gray
Weight	3 kg	3 kg

Equipment

- 2 splice trays 12/24F
- Cable organizer
- Cable glands PG-13.5: 2
- Fiber optic splice sleeve: 48
- Mounting screws for adapters: 48
- Plastic cable ties
- Blocking pins

Fiber optic patch panels 2U/19", 72F/72xSC Simplex

0-2U-72-SI-W-GR



Applications:

- Server rooms
- Fibre-optic networks
- Data processing centers
- LAN, CATV, OAN, FTTH

Product ID	0-2U-72-SI-W-GR
Construction	Slide out/drawer type
Type of adapters	SC Simplex
Max. number of adapters	72
Height	2U
Profile	19"
Depth [mm]	250
Number of splice trays	3
Max. number of splice trays	6
Capacity of splice tray	12/24
Diameter of outlet ports	4x20/4x16 mm
Material	Cold rolled steel
Colour	Light gray
Weight	3 kg

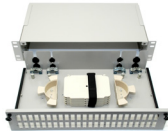
Equipment

- 3 splice trays 12/24F
- Cable organizer
- Cable glands PG-13.5: 2
- Fiber optic splice sleeve: 72
- Mounting screws for adapters: 144
- Plastic cable ties
- Blocking pins

Fiber optic patch panels

Fiber optic patch panels 2U/19", 96F/48xSC Duplex

0-2U-96-DU-W-GR



Applications:

- Server rooms
- Fibre-optic networks
- Data processing centers



- LAN, CATV
- OAN
- FTTH



0-2U-96-DU-WY-GR



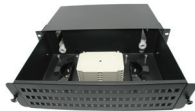
Equipment

- 4 splice trays 12/24F
- Cable organizer
- Cable glands PG-13.5: 2
- Fiber optic splice sleeve: 96
- Mounting screws for adapters: 96
- Plastic cable ties
- Blocking pins

Product ID	0-2U-96-DU-W-GR	0-2U-96-DU-WY-GR
Construction	Slide out/drawer type	Slide out on rollers/drawer type
Type of adapters	SC Duplex	SC Duplex
Max. number of adapters	48	48
Height	2U	2U
Profile	19"	Profil 19"
Depth [mm]	250	250
Number of splice trays	4	4
Max. number of splice trays	6	6
Capacity of splice tray	12/24	12/24
Diameter of outlet ports	4x20/4x16	4x20/4x16
Material	Cold rolled steel	Cold rolled steel
Colour	Light gray	Light gray
Weight	3 kg	3 kg

Fiber optic patch panels 3U/19", 72F/72xSC Simplex, 144F/72xSC Duplex

0-3U-72-SI-WY-BL

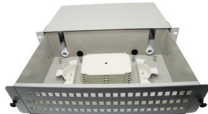


Applications:

- Server rooms
- Fibre-optic networks
- Data processing centers



0-3U-72-SI-WY-GR



0-3U-144-DU-WY-GR



Equipment

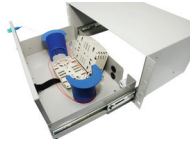
- 6 splice trays 12/24F
- Cable organizer
- Cable glands PG-13.5: 2
- Fiber optic splice sleeve: 72/144
- Mounting screws for adapters: 144
- Plastic cable ties
- Blocking pins

Product ID	0-3U-72-SI-WY-BL	0-3U-72-SI-WY-GR	0-3U-144-DU-WY-GR
Construction	Slide out on rollers/drawer type	Slide out on rollers/drawer type	Slide out on rollers/drawer type
Type of adapters	SC Simplex/LC Duplex	SC Simplex/LC Duplex	SC Duplex
Max. number of adapters	72	72	72
Height	3U	3U	3U
Profile	19"	19"	19"
Depth [mm]	250	250	250
Number of splice trays	6	6	6
Max. number of splice trays	8	8	8
Capacity of splice tray	12/24	12/24	12/24
Diameter of outlet ports	2x20/2xPG-13.5	2x20/2xPG-13.5	2x20/2xPG-13.5
Material	Cold rolled steel	Cold rolled steel	Cold rolled steel
Colour	Light gray	Light gray	Light gray
Weight	3.5 kg	3.5 kg	3.5 kg

Fiber optic patch panels

Fiber optic patch panels 4U/19", 144F/144xSC Simplex

0-4U-144-SI-WY-GR



0-4U-144-SI-WY-BL



Equipment

- 6 splice trays 12/24F
- Cable organizer
- Cable glands PG-13.5: 2
- Fiber optic splice sleeve: 144
- Mounting screws for adapters: 288
- Plastic cable ties
- Blocking pins

Applications:

- Server rooms
- Fibre-optic networks
- Data processing centers



Product ID	0-4U-144-SI-WY-GR	0-4U-144-SI-WY-BL
Construction	Slide out on rollers/drawer type	Slide out on rollers/drawer type
Type of adapters	SC Simplex/LC Duplex	SC Simplex/LC Duplex
Max. number of adapters	144	144
Height	4U	4U
Profile	19"	19"
Depth [mm]	250	250
Number of splice trays	6	6
Max. number of splice trays	10	10
Capacity of splice tray	12/24	12/24
Diameter of outlet ports	4x20/2xPG-13.5	4x20/2xPG-13.5
Material	Cold rolled steel	Cold rolled steel
Colour	Light gray	Black
Weight	4 kg	4 kg

Fiber optic patch panels 4U/19", 288F/144xSC Duplex

0-6U-288-DU-WY-GR



0-6U-288-DU-WY-BL

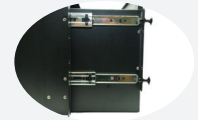


Equipment

- 12 splice trays 12/24F
- Cable organizer
- Cable glands PG-13.5: 2
- Fiber optic splice sleeve: 288
- Mounting screws for adapters: 288
- Plastic cable ties
- Blocking pins

Applications:

- Server rooms
- Fibre-optic networks
- Data processing centers

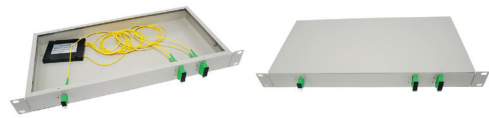


Product ID	0-6U-288-DU-WY-GR	0-6U-288-DU-WY-BL
Construction	Slide out on rollers/drawer type	Slide out on rollers/drawer type
Type of adapters	SC Duplex	SC Duplex
Max. number of adapters	144	144
Height	6U	6U
Profile	19"	19"
Depth [mm]	300	300
Number of splice trays	12	12
Max. number of splice trays	12	12
Capacity of splice tray	12/24	12/24
Diameter of outlet ports	4x20/2xPG-13.5	4x20/2xPG-13.5
Material	Cold rolled steel	Cold rolled steel
Colour	Light gray	Black
Weight	5 kg	5 kg

Fiber optic patch panels for splitters

Fiber optic patch panels for splitters 1U/19", SC Duplex

0-1U-4-1-DU-GR



0-1U-8-1-DU-GR



0-1U-16-1-DU-GR



0-1U-32-1-DU-GR



[▶ FTTx](#)
 [▶ PON](#)
 [▶ LAN, MAN, WAN](#)
 [▶ CATV](#)

Product ID	0-1U-4-1-DU-GR	0-1U-8-1-DU-GR	0-1U-16-1-DU-GR	0-1U-32-1-DU-GR
Frame	RACK 1U/19"	RACK 1U/19"	RACK 1U/19"	RACK 1U/19"
Depth [mm]	220	220	220	220
Type of adapters	SC Duplex	SC Duplex	SC Duplex	SC Duplex
Inlet port	1x SC Simplex	1x SC Simplex	1x SC Simplex	1x SC Simplex
Split	1:4	1:8	1:16	1:32
Max. number of adapters	2	4	8	16
Material	Cold rolled steel	Cold rolled steel	Cold rolled steel	Cold rolled steel
Colour	Light gray	Light gray	Light gray	Light gray
Weight	1.2 kg	1.2 kg	1.2 kg	1.2 kg

Equipment: ▶ Mounting screws for adapters ▶ Fiber optic splice sleeves ▶ Plastic cable ties

Fiber optic patch panels for splitters 2U/19", SC Simplex, SC Duplex

0-2U-32-1-SI-GR



0-2U-64-2-DU-GR



[▶ FTTx](#)
 [▶ PON](#)
 [▶ LAN, MAN, WAN](#)
 [▶ CATV](#)

Product ID	0-2U-32-1-SI-GR	0-2U-64-2-DU-GR
Frame	RACK 2U/19"	RACK 2U/19"
Depth [mm]	220	220
Type of adapters	SC Simplex	SC Duplex
Inlet port	1x SC Simplex	1x SC Simplex
Split	1:32	1:64
Max. number of adapters	32	32
Material	Cold rolled steel	Cold rolled steel
Colour	Light gray	Light gray
Weight	1.9 kg	1.9 kg

Equipment: ▶ Mounting screws for adapters ▶ Fiber optic splice sleeves ▶ Plastic cable ties

Rack shelf 19"/3U for splitter cassettes

T-SHELF



Product ID	T-SHELF
Height	3U
Profile	19"
Depth [mm]	200 mm
Material	Cold rolled steel
Weight	2 kg

Cassettes for splitter

Cassettes for splitter SC Simplex

T-CP-1:8



T-CP-1:16



T-CP-1:32



T-CP-1:64



Product ID	T-CP-1:8	T-CP-1:16	T-CP-1:32	T-CP-1:64
Type of adapters	SC Simplex	SC Simplex	SC Simplex	SC Simplex
Inlet port	1x SC Simplex	2x SC Simplex	1x SC Simplex	1x SC Simplex
Split	1:8	1:16	1:32	1:64
Max. number of adapters	8	16	32	64
Dimensions [mm]	24x100x130	50x100 x130	100x100x130	100x200x130
Material	ABS	ABS	ABS	ABS
Colour	Gray	Gray	Gray	Gray

▶ FTTx

▶ PON

▶ LAN, MAN, WAN

▶ CATV

Fiber optic metal distribution boxes

Fiber optic metal distribution boxes GFM-12-32F

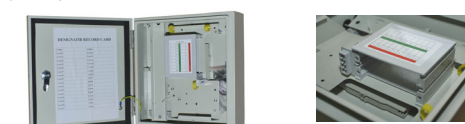
GFM-12



- ▶ FTTx
- ▶ CATV
- ▶ LAN, MAN, WAN



GFM-16



GFM-24



GFM-32



Product ID	GFM-12	GFM-16	GFM-24	GFM-32
Dimensions [mm]	300x280x70	350x335x100	380x345x60	460x345x100
Max. number of adapters	12	24	24	32
Type of adapters	SC Simplex	SC Simplex	SC Simplex	SC Simplex
Number of splice trays	1	1	1	2
Capacity of splice tray	12/24	12/24	12/24	12/24
Diameter of inlet/outlet ports	4 x \varnothing 24 mm	6 x \varnothing 24 mm	6 x \varnothing 24 mm	6 x \varnothing 24 mm
Protection	IP65	IP65	IP65	IP65
Material	Powder-coated steel	Powder-coated steel	Powder-coated steel	Powder-coated steel
Colour	Light gray	Light gray	Light gray	Light gray
Weight	2.5 kg	4.3 kg	3 kg	5.2 kg

Equipment

- ▶▶ Splice tray: 12/24F (2 splice trays for GFM-32)
- ▶▶ Fiber optic splice sleeves: 12 (24 for GFM-32)
- ▶▶ Fiber protective tube
- ▶▶ Insulation tape
- ▶▶ Keys to the lock
- ▶▶ Jubilee clips:2
- ▶▶ Bracket for pole mounting
- ▶▶ Metal clamps for bracket: 2

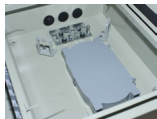


- ▶▶ Indoor/outdoor installation
- ▶▶ Ports for cable glands
- ▶▶ Corrosion resistant
- ▶▶ Low and high temperature resistant
- ▶▶ Pole mounting
- ▶▶ Wall mounting

Fiber optic metal distribution boxes

Fiber optic metal distribution boxes GFM-48-144F

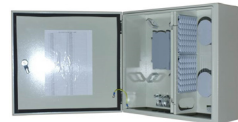
GFM-48



- ▶ FTTx
- ▶ CATV
- ▶ LAN, MAN, WAN



GFM-96



GFM-144



Product ID	GFM-48	GFM-96	GFM-144
Dimensions [mm]	485x355x105	485x425x208	600x500x160
Max. number of adapters	48	96	144
Type of adapters	SC Simplex/LC Duplex	SC Simplex/LC Duplex	SC Simplex/LC Duplex
Number of splice trays	2	4	10
Capacity of splice tray	12/24	12/24	12/24
Diameter of inlet/outlet ports	3 x $\phi 20/2$ x $\phi 40$ mm	3 x $\phi 20/2$ x $\phi 40$ mm	3 x $\phi 50$ mm
Protection	IP65	IP65	IP65
Material	Powder-coated steel	Powder-coated steel	Powder-coated steel
Colour	Light gray	Light gray	Light gray
Weight	4.5 kg	8.2 kg	11 kg

Equipment

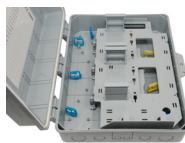
- ▶▶ Splice trays: 2/4/10
- ▶▶ Fiber optic splice sleeves: 48/96/144
- ▶▶ Fiber protective tube
- ▶▶ Insulation tape
- ▶▶ Keys to the lock
- ▶▶ Jubilee clips: 2
- ▶▶ Bracket for pole mounting
- ▶▶ Metal clamps for bracket: 2



- ▶▶ Indoor/outdoor installation
- ▶▶ Ports for cable glands
- ▶▶ Corrosion resistant
- ▶▶ Low and high temperature resistant
- ▶▶ Pole mounting
- ▶▶ Wall mounting

Fiber optic distribution box GFP-32C, PC material

GFP-32C



- ▶ FTTx
- ▶ PON
- ▶ LAN, MAN, WAN
- ▶ CATV

Product ID	GFP-32C
Dimensions [mm]	420x340x13
Max. number of adapters	32 (optional)
Type of adapters	SC Simplex/LC Duplex
Number of splice trays	2
Capacity of splice tray	12/24
Diameter of inlet/outlet ports	4x $\phi 34$ mm, 4x $\phi 28$ mm, 4x $\phi 17$ mm
Protection	IP65
Material	PC
Colour	Gray
Weight	2.6 kg

Equipment

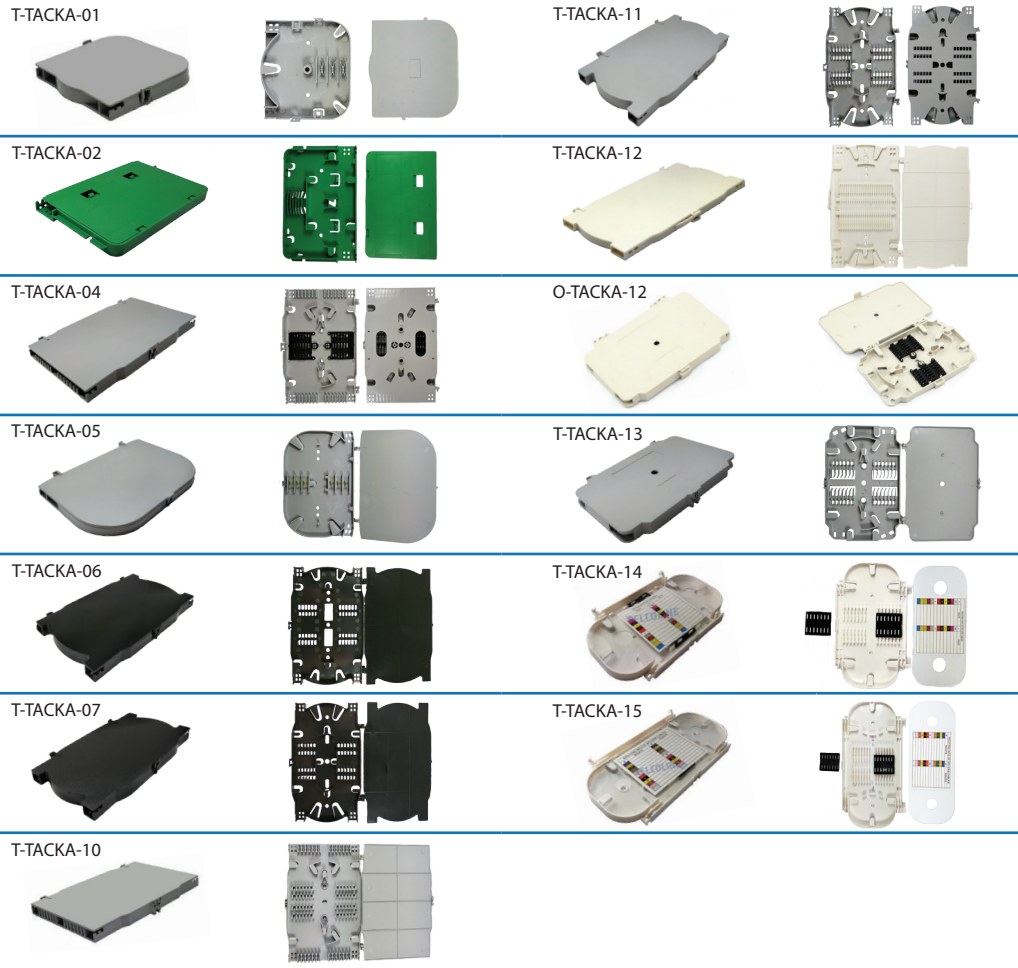
- ▶▶ Splice trays: 2
- ▶▶ Fiber optic splice sleeves: 24
- ▶▶ Fiber protective tube
- ▶▶ Jubilee clips: 2
- ▶▶ Plastic cable ties
- ▶▶ Rubber plugs
- ▶▶ Wall mounting screws and pins
- ▶▶ Keys to the lock



- ▶▶ Indoor/outdoor installation
- ▶▶ Ports for cable glands
- ▶▶ Low and high temperature resistant
- ▶▶ Wall mounting

Splice trays

Splice trays



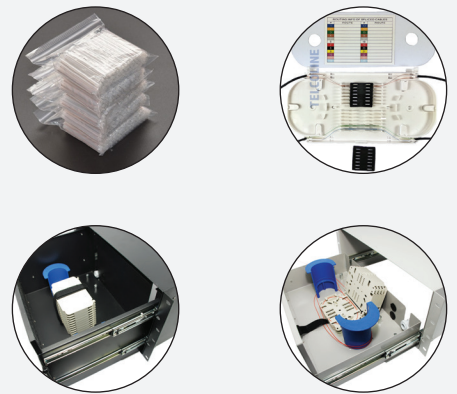
Features:

- Installation of fiber optic splices
- Mounting holes
- Option to connect trays in stacks

Applications:

- Fiber optic splice closures
- Fiber optic distribution boxes
- Fiber optic patch panels

- FTTH
- CATV
- LAN, MAN, WAN



Product ID	Material	Dimensions [mm]	Capacity of tray	Colour
T-TACKA-01	ABS	95*85*13	6 splices	Gray
T-TACKA-02	ABS	160*100*13	6 splices	Green
T-TACKA-04	ABS	157*101*19	12 splices	Gray
T-TACKA-05	ABS	149*107*17	12 splices	Gray
T-TACKA-06	ABS	160*104*14	12/24 splices	Black
T-TACKA-07	ABS	169*106*15	12/24 splices	Black
T-TACKA-10	ABS	157*130*14	12/24 splices	Gray
T-TACKA-11	ABS	170*105*15	12/24 splices	Gray
T-TACKA-12	ABS	180*104*8	24 splices	White
O-TACKA-12	ABS	140*100*12	12 splices	Beige
T-TACKA-13	ABS	140*97*25	12 splices	Gray
T-TACKA-14	ABS	175*106*13	12 splices	White
T-TACKA-15	ABS	225*114*13	12/24 splices	White